

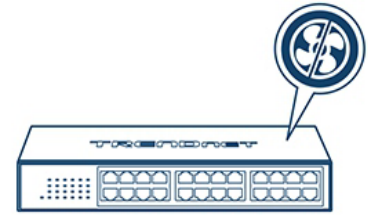
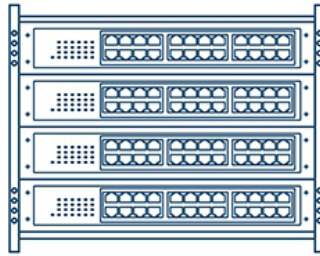
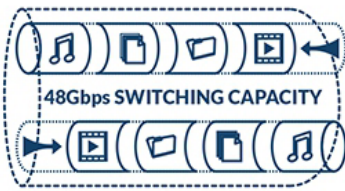


## 24-Port Gigabit Desktop Switch

TEG-S25D (v1.0R)

- 24 x Gigabit RJ-45 ports
- Sturdy metal desktop switch
- Built-in power supply
- 48Gbps forwarding capacity
- Fanless design
- 1U rackmount brackets included
- Lifetime Warranty

The 24-Port Gigabit Desktop Switch, model TEG-S25D, provides high bandwidth performance, ease of use, and reliability. Boost office network efficiency and eliminate network congestion with gigabit speeds and a total switching capacity of 48Gbps with full-duplex mode. A built-in universal power supply reduces cable clutter and diagnostic LEDs help with network troubleshooting. Plug and play this sturdy metal switch for reliable high-speed network connectivity.



### Gigabit Speeds

Gigabit ports provide high-speed network connections to 24 devices, and a 48Gbps switching capacity allows data traffic to flow smoothly, reducing traffic bottlenecks.

### Housing Design

With a compact and sturdy metal housing design, this switch is well-suited for desktop or rackmount installations (brackets included).

### Fanless

Fanless design lowers energy consumption and reduces distracting operating noise.

## NETWORKING SOLUTION



## FEATURES



### Plug and Play

Simply power up the switch and plug in connected devices



### Ports

24 x Gigabit Ethernet ports



### Switching Capacity

48Gbps switching capacity



### Housing Design

With a compact and sturdy metal housing design, this switch is well-suited for desktop or rackmount installations (brackets included).



### Jumbo Frame

Sends larger packets, or Jumbo Frames (up to 9KB), for increased performance



### Fanless

Fanless design lowers energy consumption and eliminates operating noise



### LED Indicators

LEDs convey power, link and activity



### Internal Power Supply

100~240VAC, 50/60Hz internal universal switching power supply

## SPECIFICATIONS

### Standards

- IEEE 802.3
- IEEE 802.3u
- IEEE 802.3x
- IEEE 802.3ab

### Device Interface

- 24x Gigabit ports
- LED indicators

### Data Transfer Rate

- Ethernet: 10Mbps (half duplex), 20Mbps (full duplex)
- Fast Ethernet: 100Mbps (half duplex), 200Mbps (full duplex)
- Gigabit: 2000Mbps (full duplex)

### Performance

- Switching Capacity: 48Gbps
- RAM Buffer: 512KB
- MAC Address Table: 8K entries
- Forwarding Rate: 35.71Mpps (64-byte packet size)
- Jumbo Frames: 9KB

### Special Features

- Rack Mountable

### Power

- Internal power supply: 100 – 240V AC, 50/60 Hz, 1A
- Max. Consumption: 14.24W

### Fan/Acoustics

- Fanless design

### MTBF

- 364,460 hours

### Operating Temperature

- 0° – 40° C (32° – 104° F)

### Operating Humidity

- Max. 90% non-condensing

### Dimensions (L x W x H)

- 267 x 162 x 42mm (10.51 x 6.38 x 1.65 in.)

### Weight

- 1.3kg (2.93 lbs.)

### Certifications

- FCC
- CE
- ETL

### Warranty

- Lifetime Warranty

### Package Contents

- TEG-S25D
- Quick Installation Guide
- Rack Mount Kit
- Power Cord (1.5m / 4.9 ft.)

TRENDnet offers a lifetime warranty for all of its metal-enclosed network switches that have been purchased in the United States/Canada on or after 1/1/2015. Cooling fan and internal power supply carry a one-year warranty.

All references to speed are for comparison purposes only. Product specifications, size, and shape are subject to change without notice, and actual product appearance may differ from that depicted herein.